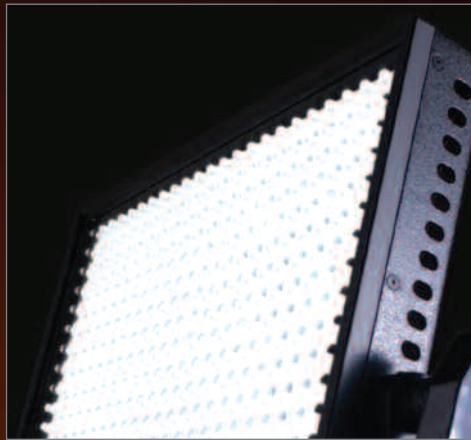
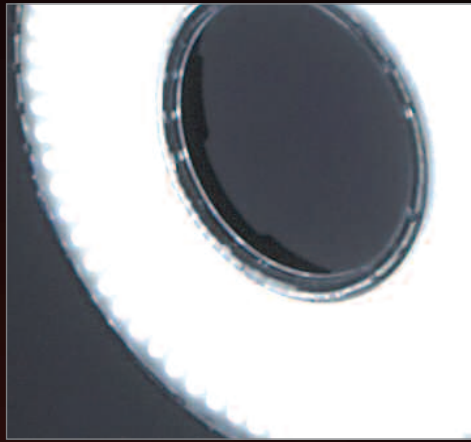


See the Lite

MINI • RINGLITE • 1x1 • RINGLITE MINI



Discover litepanels proprietary LED technology



**LITE
PANELS™**

Imagine a light source that's cool to the touch, portable, self-contained, and offers infinitely dimmable 5600°K or 3200°K output with the turn of a knob, with virtually no color shift. Plus let's suppose it's twice as power efficient —no— make it three times as efficient as conventional lights. Lamp life? A dream come true at 100,000 hours. Power options? Choose from a snap-on battery, AC adapter, cigarette lighter adapter, or run it off your camera battery. Too good to be true? Not anymore. It's a whole new kind of production lighting. We call it Litepanels. You'll call it a revolution in lighting.

The Beauty of Litepa

This revolutionary lighting brings the advantages of Litepanels™ unique proprietary light emitting diode technology to professional production lighting. Not your ordinary LEDs, Litepanels has painstakingly designed these extraordinary lamps to exceed the highest professional standards. That's why their ultra-efficient luminous soft-directional output is being praised by gaffers and cinematographers alike. Cool, silent, and ballast-free, this new lighting concept offers a multitude of benefits for working in studio, or on location anywhere in the world. It's no surprise that Litepanels have fast become an invaluable staple of the industry.



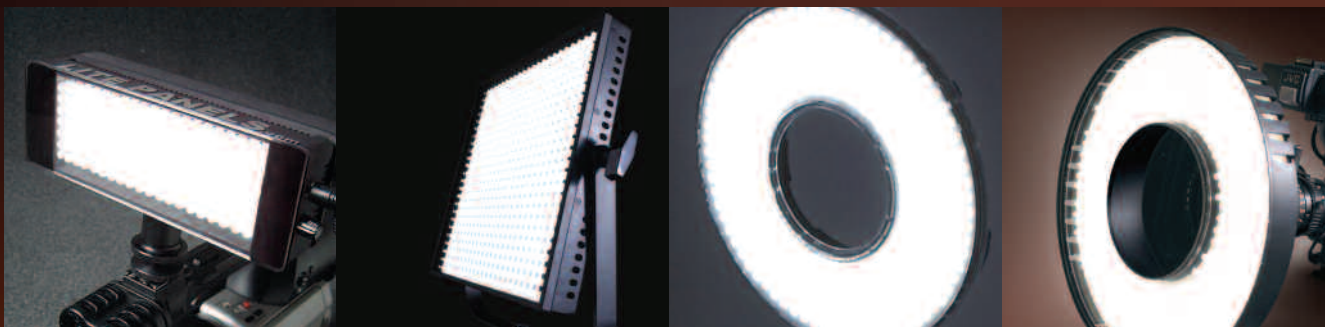
★ *Digital Content Producer*
Pick Hit Award NAB 2006

★ *Videography* 2006 Vidy Award

★ **2005 Primetime Emmy** for Outstanding
Achievement in Engineering Development

★ *Video Systems* 2005 Vanguard Award

nels™ LED Technology



Mini

1x1

Ringlite Cinema

Ringlite Mini

★ *TVB Europe Best of IBC 2005 Award*

★ *2005 Event DV Reader's Choice Award*

★ *NAB 2004 AIM Award for Innovation in Media*

★ *Government Video Salute 2004: In recognition of innovative achievement in the advancement of video technology*

★ *Video Systems NAB 2005 Pick Hit Award*

★ *Digital TV/Television Broadcast Editors' Pick of Show NAB 2004*

★ *Video Systems 2004 Vanguard Award*

★ *Videography 2004 Vidy Award: For Advancement in the Art and Science of Video Technology*

Litepanels™ Mini

Models: 5600°K Flood • 5600°K Spot • 3200°K Flood

This broad lighting source is ideal to mount on a camera, wall, or any place that calls for a highly portable soft light. Try it in a car, a hallway or beneath a computer monitor. Tight spots are a snap. Litepanels units are at home on most any camera—35mm cine, High Def, HDV, or compact DV.

Highly Controllable

Litepanels Mini heads feature an output control knob for instant dimming from 100% to 0, with virtually no shift in color. Output is fully flicker-free and heat-free, and remains consistent, even as the battery voltage goes down.



For additional control, units are available with pre-cut interchangeable conversion and diffusion gels that handily slip into an integral frame. Gels are supplied in 8 or 16-piece sets customized for every Mini Camera Lite Kit, One-Lite, or Dual-Lite package. These long-life filters can also be purchased separately, in sets or individually.

Not Power Hungry

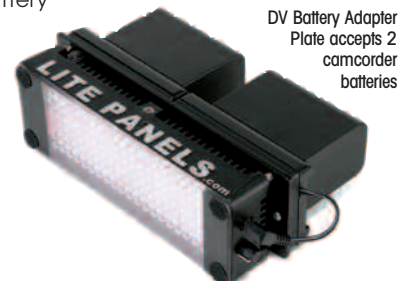


2+ hour Snap-on Battery

Litepanels Mini is three times more efficient than a conventional tungsten camera light. Plus, it's easy to handle because it's virtually heat-free. The system offers an efficient snap-on NiMH 2+ hour battery pack and a 100-240V AC international adapter/charger that can either

run the Lite or charge the battery pack.

The optional DV Battery Adapter Plate simply snaps onto the back of the Mini head, for up to 8 hours of power using 2 standard Panasonic, Canon, or Sony DV camera batteries.



Dims from 100% to 0 (with virtually no color shift)



"On *World Trade Center*, we were shooting in an extremely tight environment with the camera literally inches from Nicolas Cage's face. The Litepanels allowed me to get an eyelight in very close to the lens. Even dimmed down to the lowest level, Litepanels gave me what I needed every time."

Seamus McGarvey, BSC

"Fast, light, easy – and dimmable. I'm not doing a commercial or a feature without Litepanels in my lighting package from now on!"

Jeffrey Kimball, ASC

"Litepanels were our saviors on *The Island*. With the snap-on batteries there was no need to run a cable. We could just grab a panel at the last minute, set it almost anywhere and shoot. The quality of light was beautiful."

Mauro Fiore, ASC

Elegant Design

The Litepanels Mini head features a smart rectangular silhouette, conveniently suited to widescreen format. Measuring just 6.75" W x 2.25" H x 1.25" D (175mm x 55mm x 30mm), the head weighs only 9.6 ounces (.36kg). With its black anodized finish and sleek design, the housing blends in with modern desktops. In fact, it is so unobtrusive that it is often used on desktops in-frame. But looks aren't everything. Built for long life, the system is protected by a tough cast aluminum housing.



David St. Onge, Gaffer on the set of '24' using Litepanels.

Mounting Options

The pivoting Snap-on Baseplate allows the Mini to be fully free standing, with easy pan and tilt adjustment. The head mounts simply to a camera via the Litepanels hotshoe adapter. The optional extension arm offers ultimate positioning control.



Two-Lite Package to go

Ready to Go

Litepanels Mini is available in several configurations to suit individual requirements. Options range from the Camera Lite Kit, to single or dual lite packages that feature virtually everything you'll need in a handy case: heads, batteries, power adapters, cables, gel kits, and power adapter plugs for worldwide compatibility. The DV Lite Kit comes with either a Sony, Panasonic or Canon DV adapter plate.



On a wall



In a car



On a camera



Run and gun

"On *The Unit*, it's always something...no eye light, not enough illumination or contrast. I tell the AD to go ahead and roll sound, handholding a Lightpanels. There's no single light I couldn't live without except the Lightpanels. They are my panic light. Nothing does what it does as well as it does."

Krishna Rao, Director of Photography *'The Unit'*

"They are a lovely small source when you don't have any room, but the eyes need a bit of a twinkle."

Randall Einhorn, Cinematographer *'The Office'*

Discover Litepanels proprietary LED technology

Litepanels™ Mini

Models: 5600°K Flood • 5600°K Spot • 3200°K Flood

Specifications

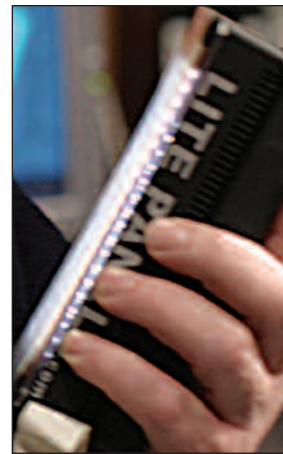
Size: 6.83"W x 2.30"H x 1.18"D (173mm x 60mm x 30mm)
 Weight: 9.6oz (.36kg)
 Power Draw: 0.6 amps at 12V DC (7 watts)
 Power Supply: DC: 9-30V, AC Adapter 100-240V

Advantages:

- Heat-free LED technology
- Produces bright soft light
- Integrated dimmer 100% to 0
- 100,000 hour rated bulb life
- Highly efficient
- Virtually no color shift when dimming
- Absolutely flicker-free 5600°K or 3200°K
- Snap-on 2+ hour rechargeable battery pack
- Snap-on pivoting baseplate
- DC—Run from battery, camera or car (9-30V)
- AC—Run from adapter (100-240V)
- Lightweight
- Handsome rectangular design
- Integrated heatsink
- Integral gel frame fits neatly on face of units
- Optional DV battery adapter plate to run from 2 DV camera batteries



Mauro Fiore, ASC, lighting himself



Litepanels offers a number of Mini packages including: DV Kit, One and Two-Lite Packages, Camera Lite Kit, and more

5600°K Mini Photometrics

Flood Head	Distance	Spot Head
90 fc / 1035 Lux	2 ft / 0.6 m	195 fc / 2250 Lux
18 fc / 195 Lux	4 ft / 1.2 m	63 fc / 675 Lux
6.7 fc / 73 Lux	6 ft / 1.8 m	24 fc / 255 Lux
2.5 fc / 26 Lux	8 ft / 2.4 m	12 fc / 129 Lux
2 fc / 21 Lux	12 ft / 3.6 m	4.5 fc / 48 Lux

"When they say "Hey, we need a bounce card!" I pull out Litepanels. "We need a light behind that telephone!" I pull out Litepanels. That's why I keep the Litepanels on my truck. (I know half a dozen other key grips that do the same, by the way!)"

James Roy Shelton, Key Grip

"For the PBS series *Texas Ranch House* we had to recreate the mid-1800s. Litepanels were perfect and the only light source we could use. Their portability and long battery life gave us everything from daylight fill to nighttime candlelight. I simply could not have done this series without my Litepanels kit."

James Jansen, Cinematographer

Litepanels™ Mini Infrared (IR)

Litepanels offers the only Infrared light source on the market designed by production lighting professionals. Litepanels™ Mini Infrared facilitates working in total darkness, making it ideal when shooting in surveillance, video night mode or with infrared film. Producing no visible light, the Litepanels IR is fast becoming an invaluable tool for cinema verite style and reality TV projects and documentaries in which you want to keep your presence minimal or shoot unseen. A single unit bounced off the ceiling can illuminate an entire room.

Litepanels Proprietary IR LEDs

For the infrared model, Litepanels has engineered unique LEDs to meet the rigorous needs of professional night photography. The lamps are positioned in the optimum array to provide the ideal degree of output.

Control at Your Fingertips

The Mini Infrared features Litepanels integrated dimmer control knob for instant dimming from 100% to 0. For close-up work, the unit comes equipped with custom designed, extremely high efficiency diffusion filter.

The Mini Design

The Mini IR is encased in a compact, rectangular housing of durable black anodized aluminum. Lightweight and low-profile, the unit attaches easily to just about any camera — or mounts on a car ceiling, in the corner of a room, on a wall, or elsewhere, for unobtrusive, out of sight illumination.

Power Efficient

Like all Litepanels products, the Mini IR requires minimum power. This ultra-efficient infrared draws an average of just 0.8 amps at 12V DC (10 Watts). It runs off of a variety of 10-30V sources,



including a standard camera battery, car battery, AC adapter, or snap-on NiMH 1.5+ hour battery pack. The optional DV Battery Adapter Plate facilitates powering off of existing DV camera batteries.

Multiple Options

Litepanels Infrared is available as a single head or in a kit including the IR Litepanel, battery pack, power adapter, swivel arm with hotshoe adapter, and more, in a convenient carrying case.

Specifications

Size: 6.83"W x 2.30"H x 1.18"D (173mm x 60mm x 30mm)

Weight: 9.6oz (.36kg)

Power Draw: 0.6 amps at 12V DC (7 watts)

Power Supply: DC: 9-30V, AC Adapter 100-240V



Cinematographer Terry Pratt uses Litepanels Mini IR

Advantages:

- Heat-Free LED Technology
- Integrated dimmer 100% to 0
- Draws just 10 Watts
- Runs from AC or batteries
- Snap-on 1.5+ hour battery
- Snap-on Baseplate
- Lightweight
- Optional DV Battery Adapter Plate to run off 2 DV camera batteries
- IR High Efficiency Diffusion Filter

“Whether shooting documentaries here in the States or halfway around the world, Litepanels IRs are a must in our kit. The long throw allows us to get shots without the camera intruding in the action or putting ourselves in extreme danger. For intense documentaries, Litepanels IR is the best source of light on the market!”

Terry Pratt, Cinematographer

“During URBEX 2005, conducted with the British Royal Army, the Litepanels Mini IR system proved valuable in extending the range of night vision devices by up to 3 km, as well as for illuminating rooms within buildings that received no ambient light. Building clearing became a much easier task as well as locating booby traps and other Improvised Explosive Devices.”

Scott Manderville, Chairman, ShotSpotter, Inc.

“We keep our presence minimal and try to interfere as little as possible. Litepanels IR units are essential for ‘stealth moments’ – the times we wouldn’t want to be seen.”

Peter Rieveschl, Cinematographer

Discover Litepanels proprietary LED technology

New! Litepanels™

Models: 5600°K Flood • 5600°K Spot • 3200°K Flood



The 1x1 is the most versatile production light ever built. Combining Litepanels' hallmark LED technology in a sophisticated, slimline housing, this revolutionary modular professional lighting system provides 1'x1' of pure, luminous, soft directional output.

Highly Controllable

The 1x1 shares many of the technical innovations designed by Litepanels to give you an unmatched level of lighting control. An ergonomic control knob on the back enables instant dimming from 100% to 0 with no shift in color. Plus,



Dial in 100% to 0 dimming with virtually no shift in color

the 1x1 offers remote dimming capability. Absolutely silent and fully flicker-free and heat-free, the system can be positioned comfortably close to a subject's face, filling it with an unmatched quality of soft, wrap-around light.

For even more control, a set of 6 interchangeable slide-in conversion and diffusion filters is available in various configurations for both daylight and tungsten versions.

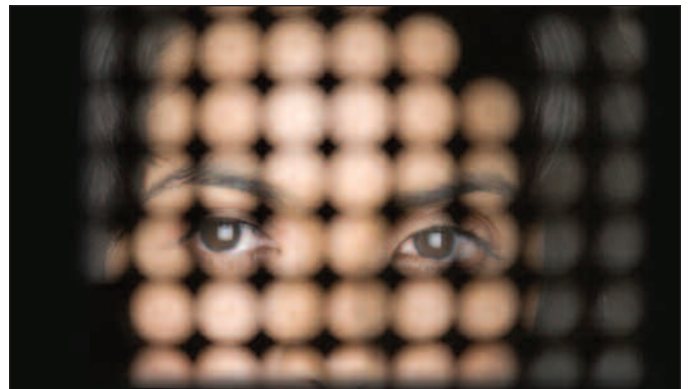
Power Efficient

Employing Litepanels' ultra-efficient LEDs, the system draws just 45 Watts @ 12V, yet outputs the equivalent of 500 Watts. The 1x1 is powered via an external 90-260VAC international adapter, which provides up to 24 VDC to the unit. Equipped with an XLR power connector cable, the 1x1 can also run off a variety of 9-30VDC sources, including a standard camera battery, car battery, or an optional Backpack PowerCell.

Square Deal

Designed for quick and easy set up and operation, Litepanels 1x1 measures just 12" (3.48cm) square, has a thickness of only 1.75" (43mm), and weighs a mere 3 lbs. (1.36kg). This ultra-flat profile, lightweight system adapts readily to a variety of lighting situations. The unit mounts easily on a light stand or tripod via a yoke with standard TVMP receptacle. Coupled with dedicated mounting hardware, the modular housing enables 2'x2' and 4'x4' multi-panel configurations — making the units able to fit a wide range of jobs.

In addition, Litepanels' groundbreaking design provides operators with a unique view-thru capability. The housing features an integrated pattern of hundreds of precisely aligned mini-portals. This offers the ability to view the subject being illuminated from behind the unit.



View-thru back lets you see the talent

"In Switzerland, shooting *Travel Café* with Chuck Henry, we used the versatile new Litepanels 1x1 in extreme conditions. It was so cool it didn't melt the Ice Hotel. The cool temperature and dimmability were important when we were shooting in museums and needed to protect sensitive art."

Joel Cooke, Cinematographer

"Litepanels 1x1 has created a new zone of usefulness. It can go where no light has gone before, I can hide it where nothing else will hide. It has real 'punch,' and infinite dimmability. The 1x1 not only replaces the smaller lights I used to use, its modularity lets us build panels up to 4'x4' replacing much larger lights."

Rodney Charters, ASC

Changing the way people light - 1x1

Multiple Options

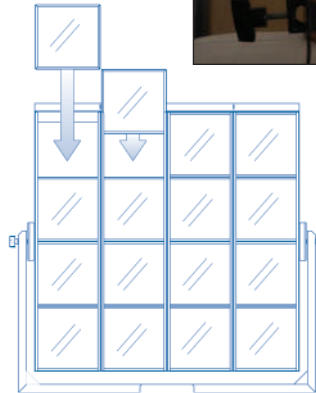
Litepanels 1x1 is available as a single daylight or tungsten fixture or in a 4-light kit with light stands and a convenient carrying case. Accessories, including Litepanels convenient PowerCell pack, and optional correction/diffusion gels, may be purchased separately.

Specifications

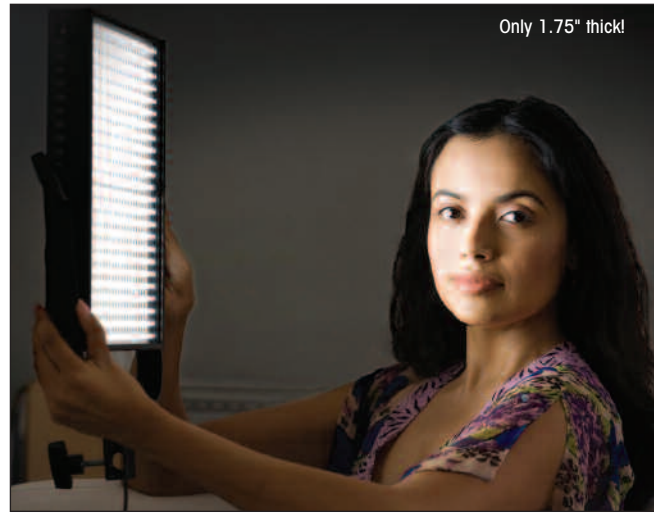
Size: 12"W x 12"H x 1.75"D (3.48cm x 3.48cm x 43mm)
 Weight: 3.00 lbs (1.36kg)
 Power Draw: 37 Watts @ 24V, 45 Watts @ 12V
 Power Supply: DC: 9-30V, AC Adapter 90-260V

Advantages

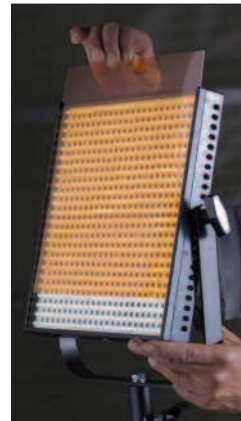
- Only 1.75" (43mm) thick
- Ultra lightweight & portable
- 12" square (3.48cm)
- View-thru to see the talent
- Heat-free & flicker-free
- Dims 100% to 0 with virtually no color shift
- Remote dimmer available
- 5600°K daylight or 3200°K incandescent versions
- Modular design for multipanel configuration
- 100,000 hour rated lamp life
- Runs on AC adapter or battery
- Litepanels award-winning LED technology
- Optional Backpack PowerCell (3+ hours)
- Ballast-free



Modular Litepanels 1x1 can be combined to form larger panels such as 2'x2', 2'x4', 4'x4', etc.



Only 1.75" thick!



Interchangeable slide-in color correction/diffusion filters offer greater lighting control



Mounts easily on stands or tripod via yoke with standard TVMP Receptacle

New! Litepanels Backpack PowerCell

Litepanels™ innovative Backpack PowerCell mounts easily and unobtrusively on the rear of the Litepanels 1x1. The unit attaches in seconds to provide up to 3 hours of run time. A handy battery charger unit restores the PowerCell to 80% capacity in just over an hour. With a thickness of 1" (2.54 cm), and measuring 3.5" by 11" (10.2cm x 27.9 cm), the 1.5 lb. (.68 kgs), ultra-thin PowerCell lets you position the light virtually anywhere. The Backpack PowerCell can also run the Ringlite Mini.



5600°K 1x1		
Flood Head	Distance	Spot Head
64 fc/723 Lux	4 ft/1.2 m	150 fc/1695 Lux
21 fc/237 Lux	8 ft/2.4 m	45 fc / 508 Lux
11 fc/124 Lux	12 ft/3.6 m	25 fc / 282 Lux

"When I had a chance to start using the new 1x1 Litepanels, I saw my dividend increase. Now this light can compete with daylight and serve as an interior key with major firepower in a small package – ready to put almost anywhere. I can see the new 1x1 setting the industry in a new direction, from big feature films to small camera digital cinematography."

David Frederick, SOC

"On Next, we're carrying two Ringlites, three Litepanel kits, and six of the new 1-by's. A digital camera is much more light sensitive, so the ability to dial a light down and use, say, 25 percent with no shift, is important."

Jeff Morrell, Gaffer

Litepanels 1X1

Discover Litepanels proprietary LED technology

Ringlite™ Cinema

Models: 5600°K • 3200°K

Employing an array of seventy-two segments of ultra-powerful LEDs laid out in a precisely spaced concentric design, this ingenious illumination tool produces an even quality of luminous, soft directional output.



Ringlite Cinema

Ultimate Control at Your Fingertips

Ringlite controls lighting through three separate, adjustable circuits. Operators can select 24, 48 or the full 72 LED segments. Thanks to its heat-free and flicker-free output, Ringlite can be moved in close with no discomfort to the subject.

The system's ergonomic integrated dimmer control enables instant dimming from 100% to 0 with virtually no shift in color. For additional lighting refinement, a set of interchangeable correction/diffusion gels is available. They fit neatly on the face of the unit, held in place by a translucent cover.

Power Efficient

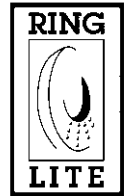
Ringlite draws just 70 watts. Power is provided by a new external AC/DC power supply, which operates from either 85-240 VAC or 9-30 VDC. This new DC mode allows the unit to run from a standard battery belt, or other DC power sources.

Versatile Design & Mounting

Measuring 19" in diameter with an open center of 9" and a depth of 3.5", this slim, low-profile light source fits comfortably around virtually any professional shooting lens. Outfitted with a Panavision, Arriflex or video bracket, the unit mounts firmly on the camera system's lightweight support rods. Ringlite can also be mounted remotely via a baby-pin bracket, or handheld.

Options

The system's improved 85-245VAC international AC adapter may be purchased separately as a power supply upgrade for existing Ringlite owners.

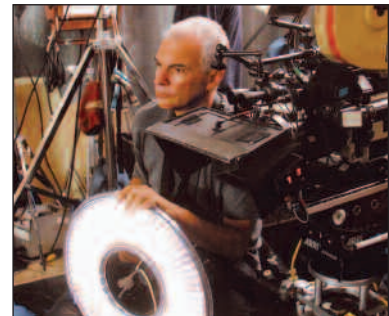


Specifications

Outer Diameter: 19" (48.26 cm)
 Inner Diameter: 9" (22.86 cm)
 Depth: 3.5" (8.89 cm)
 Weight: 5.5 lbs (2.5 kg)
 Power Draw: 70 watts, 9-30VDC
 Power Supply: DC 9-30V, AC Adapter 85-245V

Advantages

- Soft & directional
- Lightweight, slimline design
- AC/DC
- Dims 100% to 0 with virtually no color shift
- 3 circuits — remotely controlled
- Heat-free & flicker-free
- Optional correction/diffusion gel filter pack



Theo Van de Sande, ASC handholds Ringlite for just the right kick

Ringlite Photometrics

5600°K		Distance	3200°K	
260 fc / 2782 Lux		2 ft / .6 m	260 fc / 2782 Lux	
240 fc / 2568 Lux		4 ft / 1.2 m	110 fc / 1177 Lux	
140 fc / 150.7 Lux		6 ft / 1.8 m	45 fc / 481.5 Lux	
90 fc / 963 Lux		8 ft / 2.4 m	24 fc / 256.8 Lux	
24 fc / 256.8 Lux		16 ft / 4.8 m	6 fc / 64.2 Lux	

"Now, after I have finished lighting my set I ask the gaffer for the Ringlite, which for my crew means we are ready to shoot. And when we shoot I am ready to cover the small surprises that always come up during the shooting, light up the dark area where the actor suddenly decides to go or single out one of the characters to enhance his or her performance."

Theo Van de Sande, ASC

New!

Ringlite™ Mini

Models: 5600°K • 3200°K

Ringlite™ Mini is a smaller version of the original LED Ringlite. Measuring 10.5" in diameter, just 2" thick, and weighing approximately 3.5 lbs., Ringlite Mini provides the same luxurious level of luminous, soft directional output in a cost effective, versatile package. This ultra-low profile, lightweight professional lighting tool is equally at home on or off camera, mounted on a stand, the wall, or elsewhere.

Three Channels & No-Shift Dimming

The Ringlite Mini employs powerful LEDs laid out in a tightly plotted grid. Lighting is divided into three separate user selectable segments (bottom, middle, top). Independent, adjustable circuits control channels of output. On the back of the unit, four easy-to-reach toggle switches regulate power and control upper, center, and lower illumination. An ergonomic integrated control knob allows for instant dimming from 100%-0 with virtually no shift in color. Plus, Ringlite Mini offers remote dimming capability. Completely flicker and heat-free, the system can be moved in comfortably close to a subject, for unmatched soft, wrap-around light. A set of 8 interchangeable conversion and diffusion filters is available.

Power Efficient

This ultra-efficient LED light source draws just 3.5 amps (40W @12VDC). Power is provided by an external 100-240VAC international AC adapter. Equipped with an XLR power connector cable, the unit can be run off of 9-30VDC battery sources such as the Litepanels Backpack PowerCell.

Camera Friendly

Ringlite Mini offers 3 easy ways to interface popular cameras. The first is the Camera Adapter Bracket which attaches the Ringlite Mini to the bottom of the camera via a standard 5/8" threaded screw. The second method mounts the Ringlite Mini to the lens. This approach includes a two-stage filter box (3x3, 4x4, 4x5.65 and 4x6 glass filters) with a Chrosziel or Petroff adapter plate. For larger camera and lens systems, the filter box slides onto standard lens support rods.



Ringlite Mini fits most popular cameras

Advantages

- Soft & directional
- Lightweight, slimline design
- Dims 100% to 0 with virtually no color shift
- 3 user selectable circuits
- Heat-free
- Flicker-free

Options

- Backpack PowerCell (3+ hours)
- Matte Box adapter plates
- Correction/diffusion gel filter pack
- Quick-Release Mounting system
- Integrated filter holder
- Remote Control



Four switches control power & top, center, bottom illumination

Ringlite Mini Photometrics

5600°K	Distance	Circuit
11 fc /117.7 Lux	5 ft/1.5 m	1
25 fc /267.5 Lux	5 ft/1.5 m	2
70 fc /749 Lux	5 ft/1.5 m	3
4.3 fc / 46 Lux	10 ft/3 m	1
7 fc / 75 Lux	10 ft/3 m	2
8.5 fc / 91 Lux	10 ft/3 m	3

“The Ringlite is a multi-use tool, not to mention that it could be the television source light of the future. It’s simple and efficient and gives a DP speed and freedom.”

Franz Lustig, Cinematographer

“Before the arrival of Litepanels Mini and the Ringlite, I felt like we were living in the Dark Ages. The lights have completely transformed my approach to shooting, especially smaller, more intimate scenes.”

Tom Krueger, Cinematographer

Discover Litepanels proprietary LED technology



Discover Litepanels proprietary LED technology



www.litepanels.com

Ph: 818 752 7009 • Fax: 818 752 2437

10932 Burbank Boulevard • North Hollywood CA • 91601 USA

E-Mail: info@litepanels.com

Specifications subject to change without notice

Litepanels products are covered under one or more of the following patents: 6,749,310, 6,948,823, with other patents pending.

Printed in USA, LP_Bro_6-06, GCA 5k